



What's This

English — Looking and Describing ILA114



Learning Outcome

You will learn to describe what animals look like.

Here are some signs you will see in this workbook:



Look.



Talk to your supervisor.



Write or draw.

You will need:

- a pencil or pen
- extra pieces of lined paper
- something to describe for Activity 11
- a magnifying glass (optional).

Activity 1 | Hei mahi 1

Learning Intention one

I will talk about and describe what animals look like.

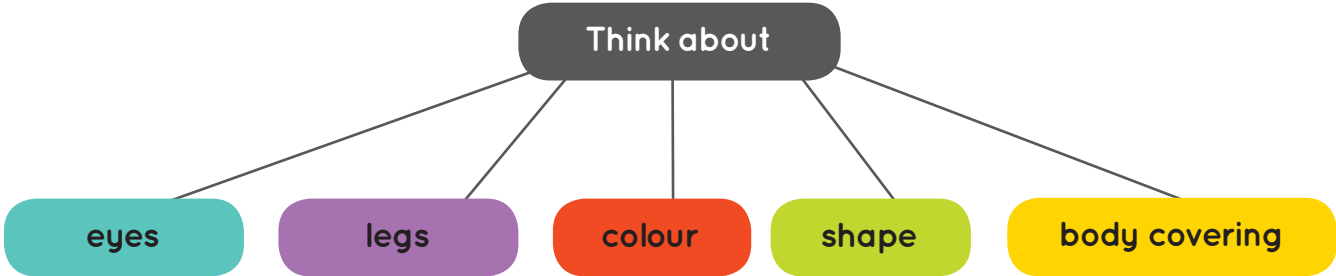
Did you guess that the picture on the cover is a cat's eyes in the dark?

 Now look closely at the whole cat below.



TE KURA

 Tell your supervisor what this cat looks like.



Activity 2 | Hei mahi 2

When you told your supervisor what the cat looked like you were **describing** it.

Sam and Fiona describe how a cat looks too.



Read what they say together.



Fiona

A cat has four legs and two eyes. It has whiskers, ears and a tail.



Sam

A cat has fur covering its body. It has special eyes that can see in the dark as well as daytime. Whiskers on its face help it to judge small spaces it might fit in. Its ears can move around and hear many sounds. The paws at the end of its four feet have claws.

Which description is better?



Tick the box to show what you think.

Fiona's description

Sam's description

Activity 3 | Hei mahi 3

Fill in the chart below.

Describe your own or your family's cat. Use the photo from Activity 1 if you haven't got a cat.

Feature Chart	
Name Cat	
Colour	
Body covering (fur) How does/would it feel? (smooth, rough, silky)	
Size (small, medium, large, as big as...)	
Eyes (colour, shape)	
Legs (long, short, thick, thin)	
Any other features? (For example: heavy, light weight, type of cat.)	

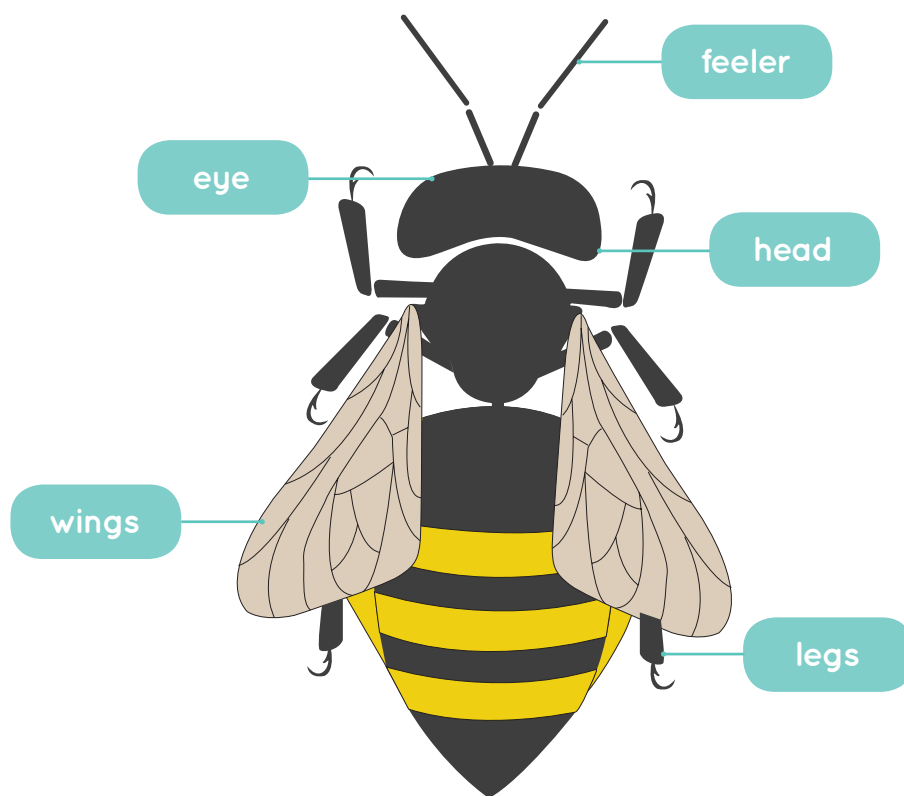
Activity 4 | Hei mahi 4



Look closely at this picture of a bumble bee. It is bigger than a real one.



Talk to your supervisor about the size of a real bumble bee and anything you know about them – where they live – what they do.



The Bumble Bee

Activity 5 | Hei mahi 5

Learning Intention two

I will write a description of a bumble bee.

I will:

- plan my writing
- talk about my plan
- write a draft of my description
- edit my draft before I publish it.

Now use the chart on the next page to help you write a draft description of a bumble bee.



You can put the features in any order when you write.



Talk to your supervisor about what you will do before you start.



Read the chart on the next page with your supervisor.



Then write in all the features of a bumble bee.

Feature Chart

Name	
Colour	
Body covering (skin, fur, feathers, scales ...) How would it feel? (smooth, rough, soft, hard, slimy ...)	
Size (small, medium, large, as big as...)	
Eyes	
Legs/wings (long, short, thick, thin)	
Any other features?	

Activity 6 | Hei mahi 6

Write your draft copy on lined paper.



Activity 7 | Hei mahi 7

Edit your work with your supervisor.

Activity 8 | Hei mahi 8

Learn how to spell one or two words you nearly know.



Activity 9 | Hei mahi 9

Publish your description on the next page.





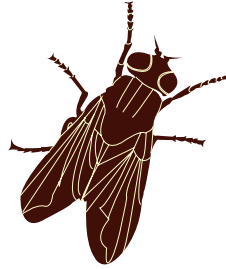
Activity 11 | Hei mahi 11

Now find your own animal or a picture of one to look at closely.

Here are some things you could look for.



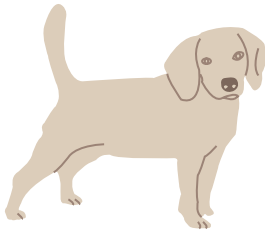
worm



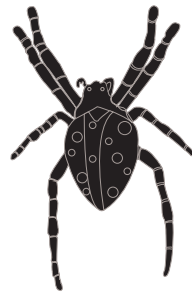
fly



bird



dog



spider



ant



Use your magnifying glass if your animal is very small.



Talk to your supervisor about your animal's features.



Fill in the feature chart on the next page.

Cross out any feature your animal doesn't have.

Feature Chart

Name	
Colour	
Body covering (skin, fur, feathers, scales ...) How would it feel? (smooth, rough, soft, hard, slimy ...)	
Size (small, medium, large, as big as...)	
Eyes	
Legs/wings (long, short, thick, thin)	
Any other features?	

Activity 12 | Hei mahi 12



Use your chart to help you describe the way your animal looks to your supervisor.



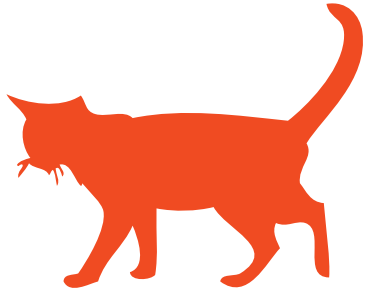
Draw your animal below.

Add names for parts of its body, (like the bumble bee in Activity 4).

Publish your description

- on paper
- on the computer and print it out
- make it into a book.

Activity 13 | Hei mahi 13



Checking up Time



Pin or clip your published work and draft writing to the back of this workbook.



Look back to check your work.

Tick the correct box

Yes

No

I know what an animal's features are.

I can describe how an animal looks.

I learnt these words

My supervisor says

The activity I liked best was number



Assessment and evaluation

Complete the assessment and evaluation.

Return it to your teacher with your writing.

LEARNING INTENTION	NOT ATTEMPTED	HAD A GO	SUCCEEDED	DID VERY WELL	DID AN EXCELLENT JOB
I can talk about what an animal looks like with my supervisor.					
I can brainstorm my ideas for writing.					
I can write my ideas in a draft.					
I can edit my writing with my supervisor.					
I can describe an animal's: <ul style="list-style-type: none"> • name • colour • body covering (how it would feel) • size • eyes • legs/wings • other features. 					

Something new I learned

Something I would like my teacher to comment on

Supervisor comment

Teacher comment

Extra Paper

Blank writing area with horizontal dashed lines.

Extra Paper

Handwriting practice area with 20 horizontal dashed lines.

Acknowledgements

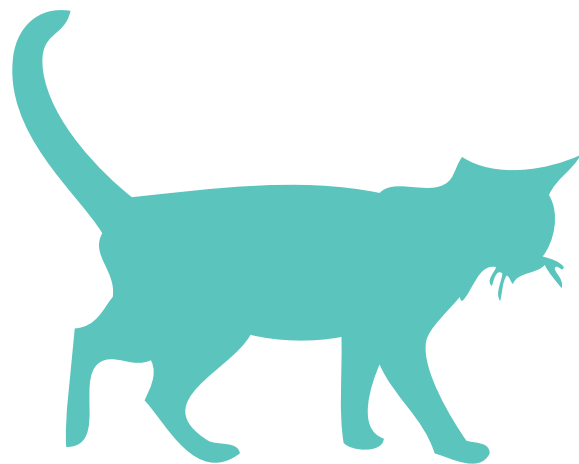
Every effort has been made to acknowledge and contact copyright holders. Te Aho o Te Kura Pounamu apologises for any omissions and welcomes more accurate information.

Photos

Cat #1, Jennifer Hardiman, Te Kura

Illustrations

All illustrations and diagrams copyright © to Te Aho o Te Kura Pounamu, Wellington, NZ.



Copyright © 2012 Board of Trustees of Te Aho o Te Kura Pounamu, Private Bag 39992, Wellington Mail Centre, Lower Hutt 5045, New Zealand. All rights reserved. No part of this publication may be reproduced or transmitted in any form or by any means without the written permission of Te Aho o Te Kura Pounamu.

