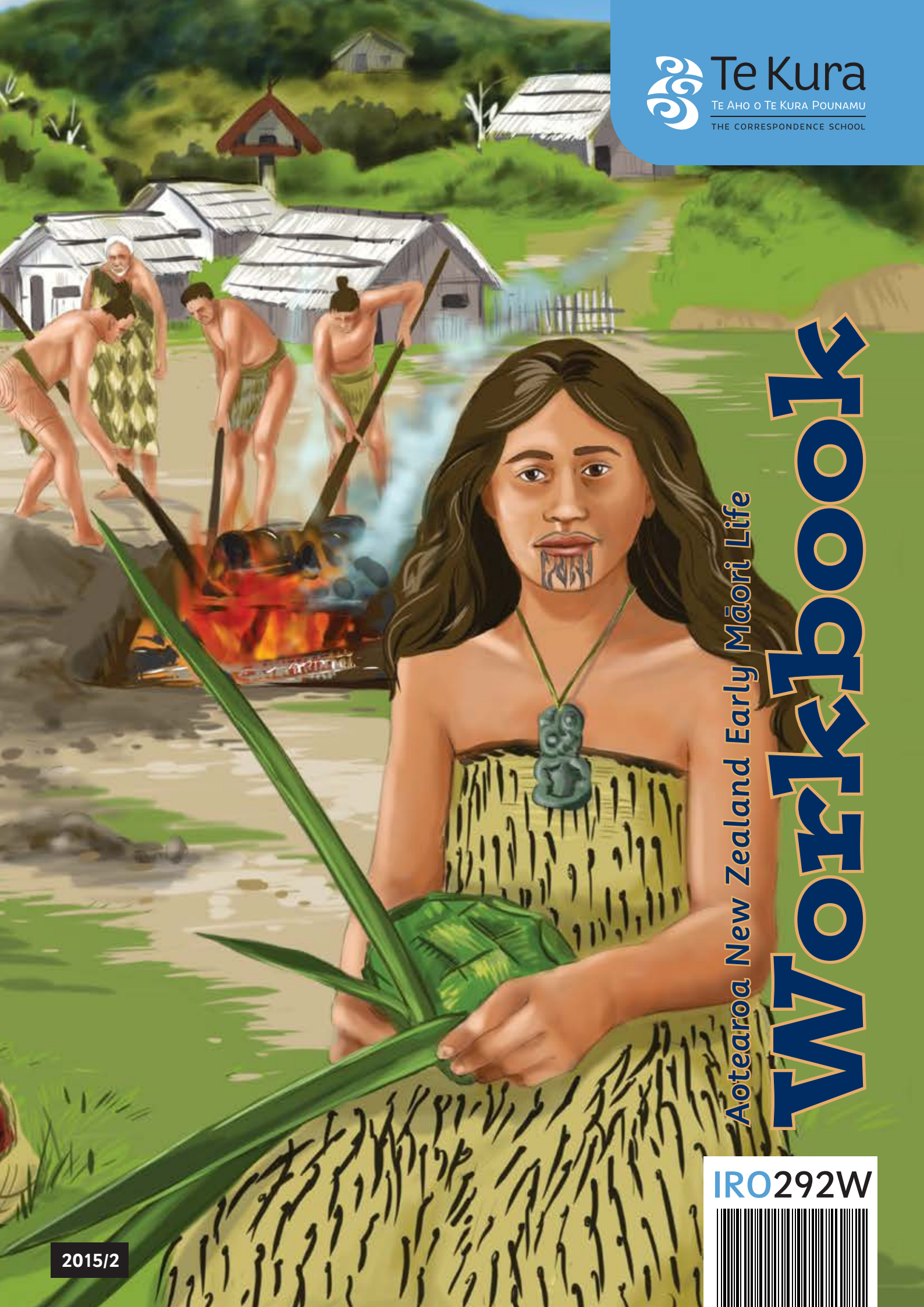




Te Kura

TE AHO O TE KURA POUNAMU
THE CORRESPONDENCE SCHOOL

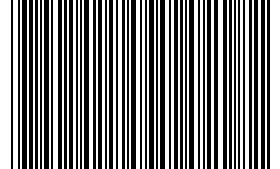


Aotearoa New Zealand Early Māori Life

Workbook

2015/2

IRO292W



Copyright © 2015 Board of Trustees of Te Aho o Te Kura Pounamu, Private Bag 39992, Wellington Mail Centre, Lower Hutt 5045, New Zealand. All rights reserved. No part of this publication may be reproduced or transmitted in any form or by any means without the written permission of Te Aho o Te Kura Pounamu.

Read the sentences.

Write T (true) or F (False) in each box.

Māori came to Aotearoa from warm, Polynesian islands.

Aotearoa was just like their old home.

Māori made clothes and houses from the new plants they found in Aotearoa.

The men wove the flax.

Women were tattooed on the lips and chin.

Each house had one room and all the whānau slept there.

Cooking and eating was done inside the whare.

Sometimes the chief's house was used for meetings.

There was plenty of food in Aotearoa.

Aotearoa did not change after people came here.

Write the correct English word to match the Māori.

family	sleeping house	basket	New Zealand
food	flax	tattoo	seafood
birds	meeting house	village	

moko

kete

kai

harakeke

wharepuni

whānau

kaimoana

wharenuī

manu

Aotearoa

kāinga

Tick the boxes that show what Māori used these for:

	food	clothes	houses
harakeke			
dogs			
berries			
kūmara			
raupō			
kākāpō			
feathers			
fern roots			
manu			
kaimoana			
nīkau leaves			
kete			
flax			
tāmure			
shellfish			

Match ngā manu with the picture.

kererū

kākāpō

tūī

kiwi

whio

weka

pūkeko



Here are some of the foods that early Māori found in Aotearoa.

kākā	kina	kōura	kererū	moa
tarakihi	whio	paua	weka	berries

Put the names in the right boxes to show where they were found.

sea and beaches	forests and grasslands	lakes, rivers and swamps

Talk to your supervisor about the ones you have eaten.



Māori had to find new ways to hunt and catch food in Aotearoa. Talk about:

How is the hunter going to catch the birds?

How do you think he will carry them home?

Write your ideas in sentences on the lines below.

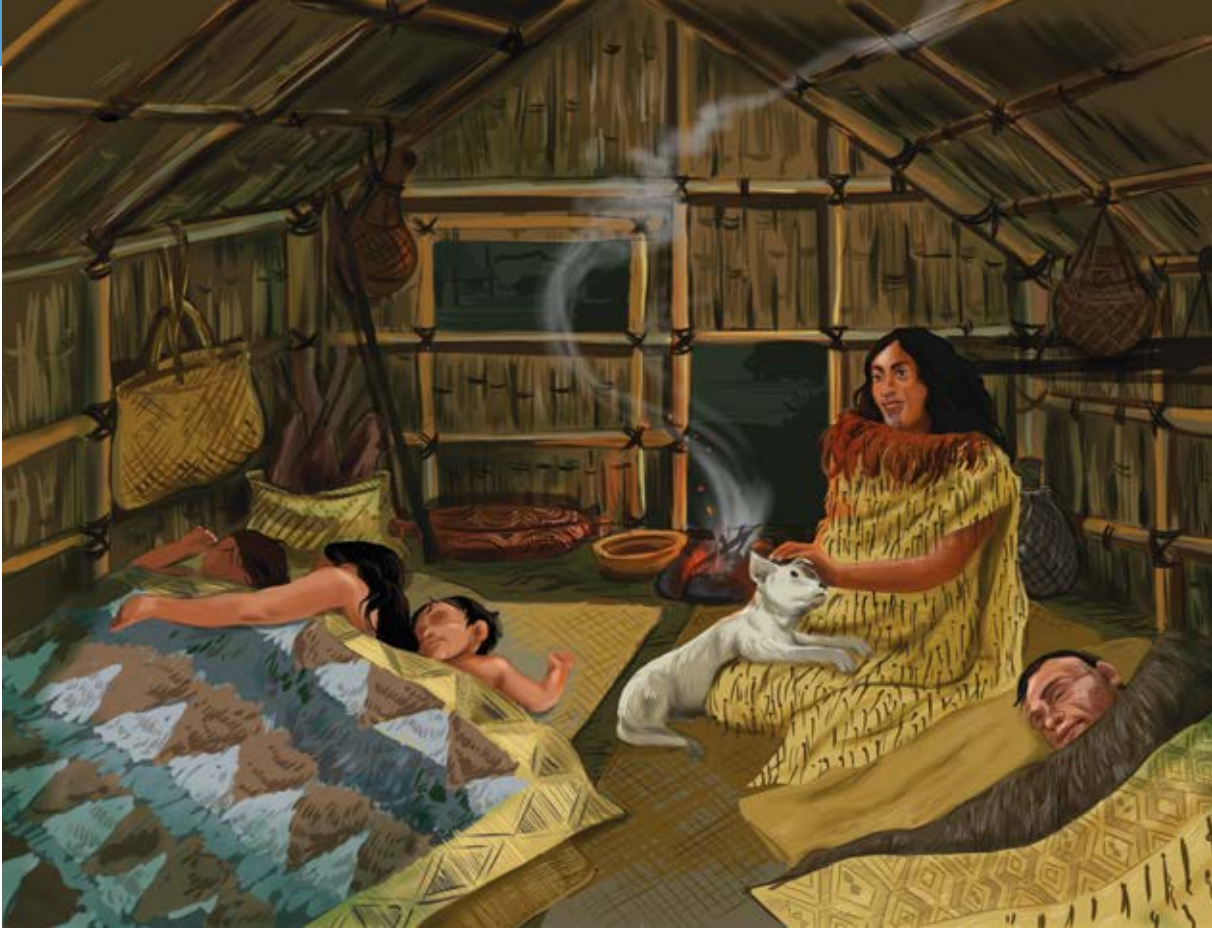


Talk about this picture.

What are the different ways Māori collected kaimoana?

List some of the things Māori needed to go fishing?

Write some of your own ideas about the picture.



Imagine you are sleeping in the wharepuni.

What would you hear and see? Imagine what you can smell and how it would feel.

Write at least four ideas to help you plan an imaginary story. Type up your story and send it to your Te Kura teacher.

1. _____
2. _____
3. _____
4. _____

Assessment

IRO292W

Learning Intention	No progress	Some progress	Significant progress	Goal achieved
I read the book and learnt some new facts about early Māori life in Aotearoa.				
I can name some ways that Māori hunted and caught food.				
I wrote about early Māori life.				

Student's comments

Supervisor's comments

Every effort has been made to acknowledge and contact copyright holders.
Te Aho o Te Kura Pounamu apologises for any omissions and welcomes more accurate information.

COVER SHEET



STUDENTS – PLACE STUDENT ADDRESS LABEL BELOW OR WRITE IN YOUR DETAILS.

Full Name _____

ID No. _____

Address _____
(If changed)

AUTHENTICATION STATEMENT

I certify that the assessment work is the original work of the student named above.

Signed _____ Signed _____
(Student) (Supervisor)

FOR SCHOOL USE ONLY

ASSESSMENT

WWW.TEKURA.SCHOOL.NZ

